



***Let's use a  
TAX FREE ENERGY!  
Let's use  
SOLAR ENERGY***

THE BEST IN  
SOLAR ENERGY



**DID YOU KNOW  
THE COST OF  
SOLAR PANEL  
HAS DROPPED BY  
80% SINCE  
2008?**

# Let's Understand, How Does The Solar Rooftop System Works?

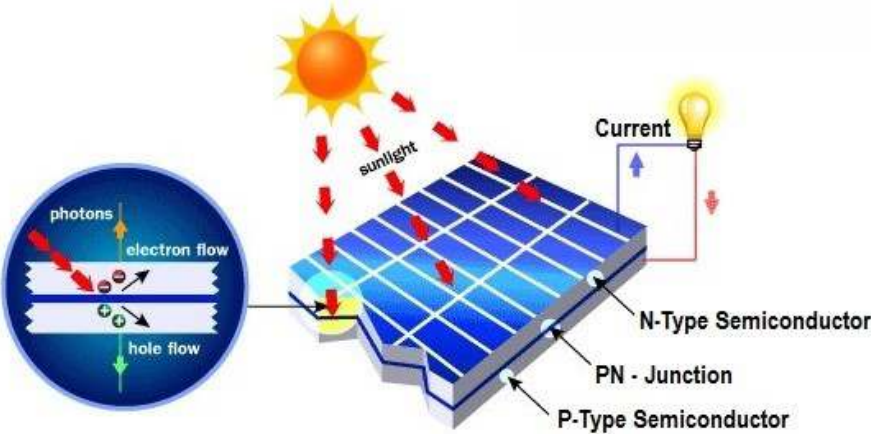


## Solar Rooftop System

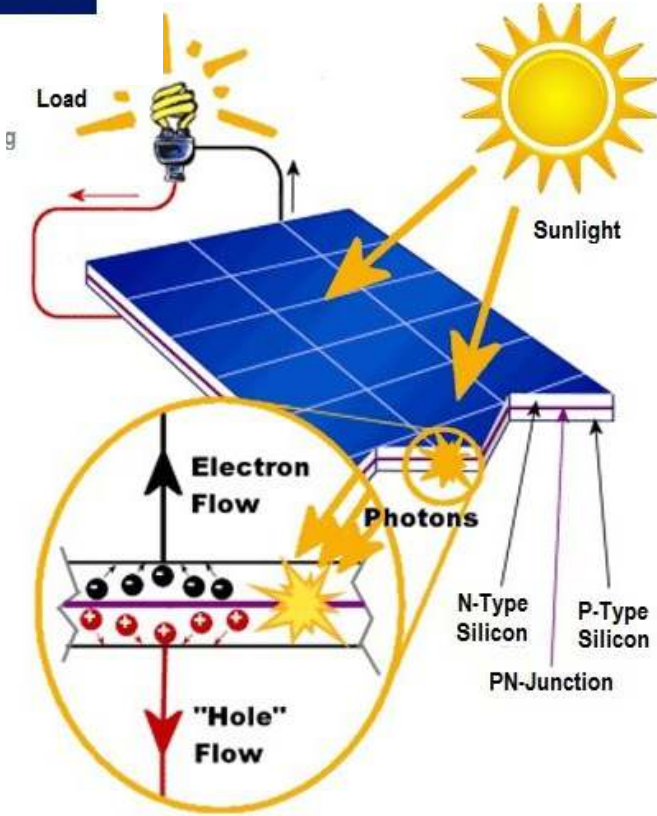
In a grid connected rooftop system DC power is produced using solar panels. This produced power is changed over to AC power using solar inverter and is supplied to the grid using either of 33 kV/11 kV three phase lines or of 440V/220V three/single phase line depending upon project location and legitimate prerequisites.

Such system produces power during the day serving captive load requirements directly and feeds excess power to the grid. In the event, when produced power is not adequate, the captive load requirements are met by drawing power from the grid network.

# Solar Cell Working, The Core of Solar Panel

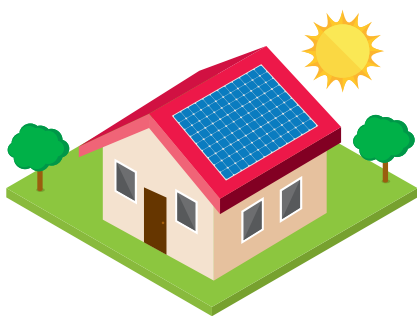


## Basic Operating Principle of a Solar Cell



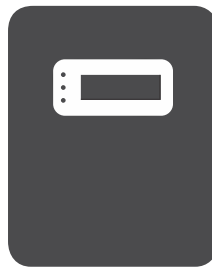
# Net Meter Means Net Benefits

This is basically a bi-directional energy meter which records both usages from distribution grid and supply of solar energy into distribution grid. Thus, net metering allows consumers to offset their electricity bills and credit produced energy in the grid.



## Rooftop Solar Plant

Solar panels convert energy from the sun into electricity



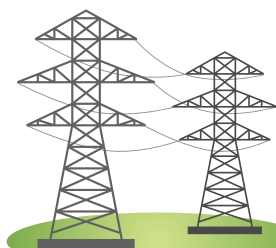
## Inverter

An inverter converts the electricity produced by the solar panels from direct current (DC) to alternating current (AC) for use in your home, school or business



## Appliances/Load

The inverter is used in your home, school or business



Excess energy from your solar panels not used in your home goes back to the electrical grid

Energy used in your home from the electricity grid



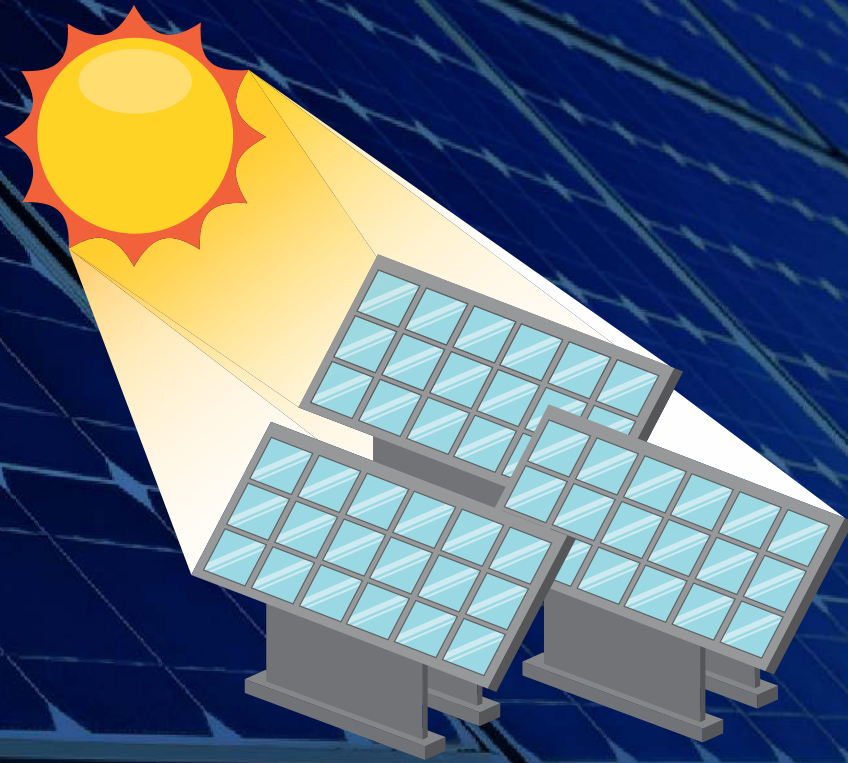
## Bi-directional Energy Meter

A bi-directional meter measures energy used and excess energy produced





# Why should you invest in Solar rooftop system?



- Electricity generation is free.
- Extremely low maintenance cost.
- Project payback within 5 years.
- Minimum 25 years of project life.
- Increasing per unit charges by discom, will have no effect on your monthly budget.
- Tax benefit for commercial units.
- Government subsidy for residential and trusts.
- Hassel free installation.

# Ansh Solar offers the best end-to-end solutions for solar rooftop



Ansh Solar is a team of experts in solar power industry. We have unparalleled expertise which enables us to provide you end to end solution for setting up your solar rooftop system. With our flawless working model and experience team we are able to execute the project without any hassle in your operations.

We cater to all the possible projects in Solar Power plant, like Residential, commercial or industrial. We can install the system on any surface like RCC roof, Metal sheet roof or ground mount.

Our vision is to provide you THE BEST IN SOLAR ENERGY. So that your solar power plant can give you electricity for a very long time.



# Super seven advantages to work with Ansh Solar

1

**Quality workmanship**

2

**Highly accurate system design**

3

**Accurate troubleshooting**

4

**Time bound work**

5

**Transparency**

6

**Experienced and knowledgeable team of experts**

7

**Timely O&M for best output from solar system**



# Our services ensure peace of mind



- Electricity bill analysis and on that basis required Solar Rooftop System (SRS) capacity
- Rooftop drawing and simulation of system placement on the roof along with shadow analysis
- SRS projection of unit generation
- Purchase of all the material required to set up SRS
- Installation of Mounting structure and panel mounting
- Cable connection from Solar PV to Inverter to GRID
- Government approval of the project and DISCOM coordination

You provide us required documents and your project will be taken care by us from starting till end

# Our thoughtful associations to offer you the best

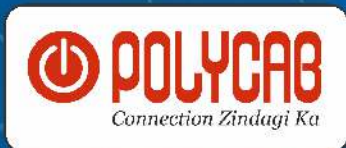
## Solar Module



## Solar Inverter



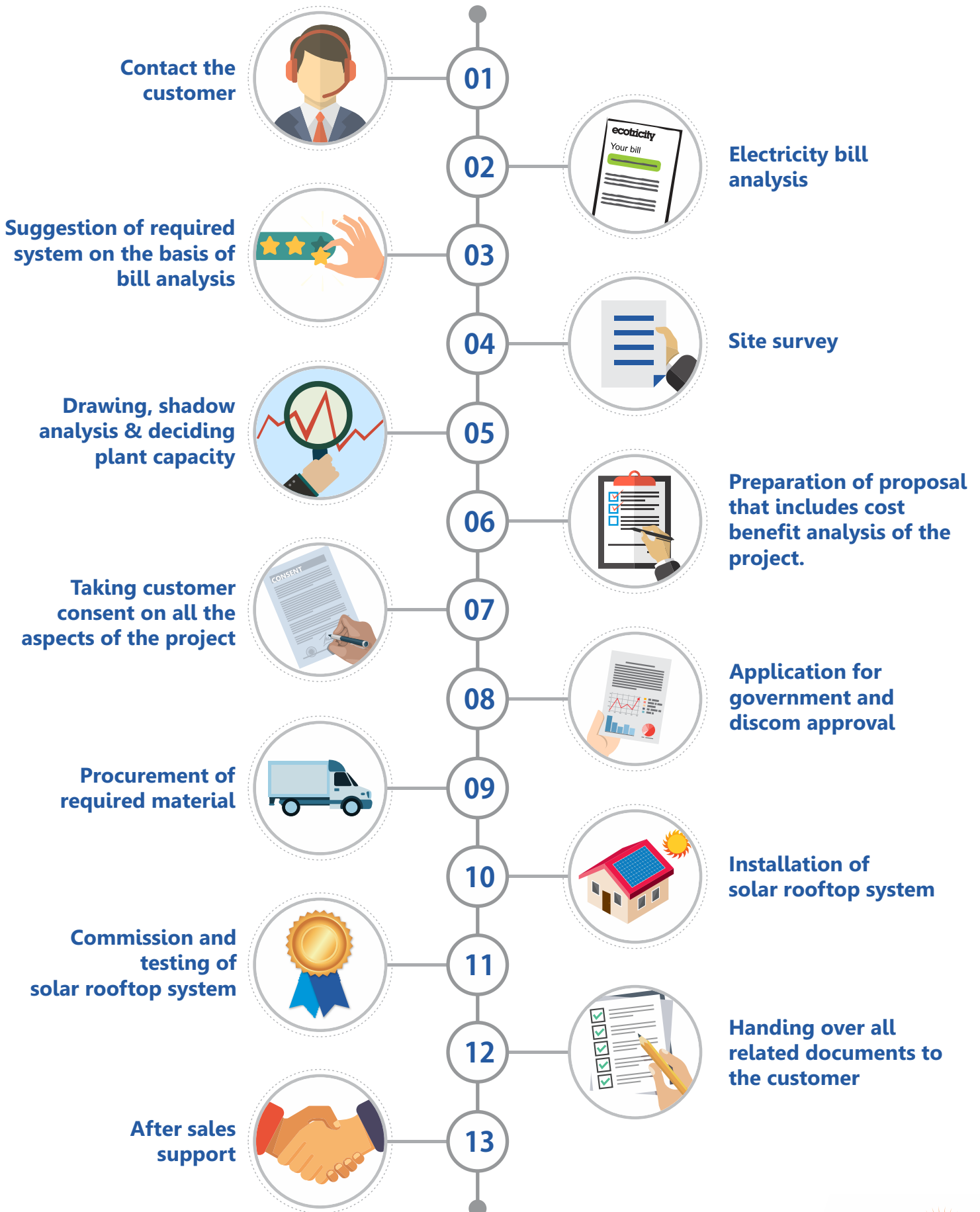
## Cable



## Protection devices

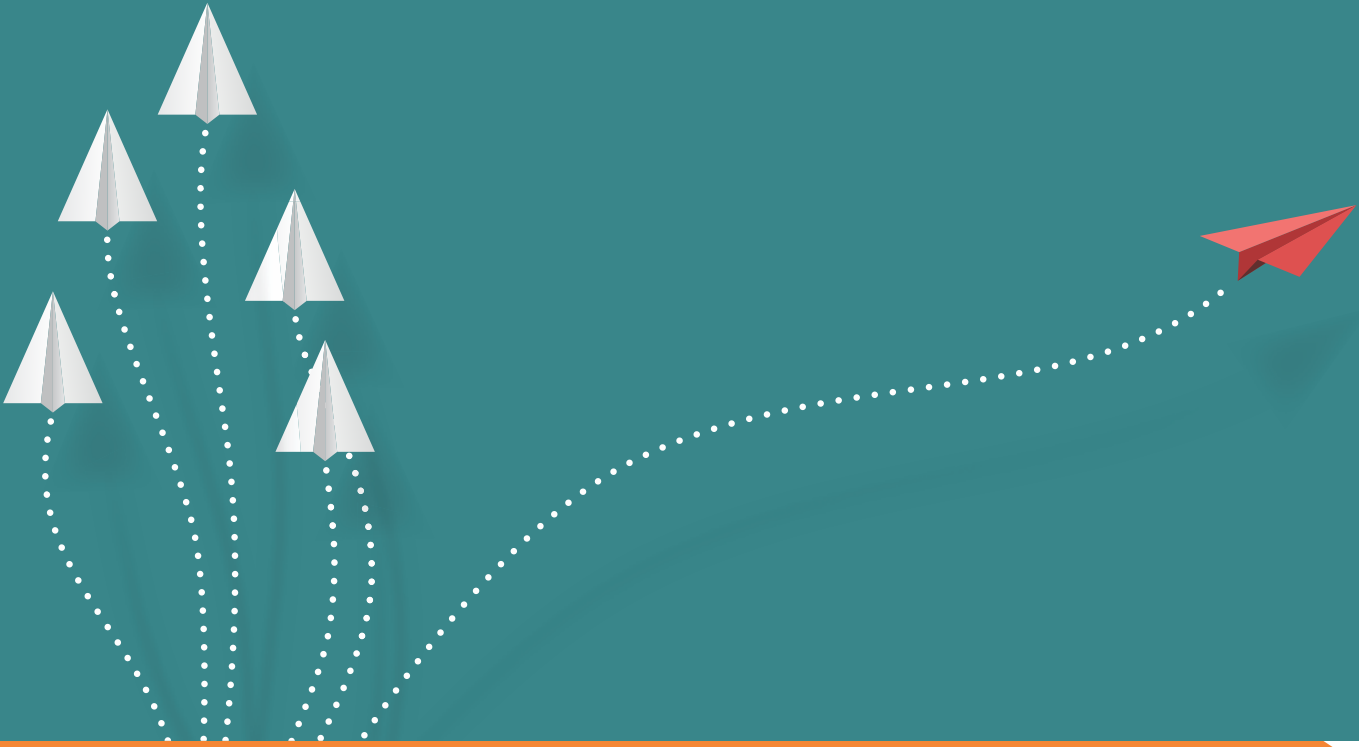


# Installation Working Methodology of Ansh Solar





# Ansh Solar does it differently



# Structural Strength is one of the most important aspects of rooftop system

OTHER

V/S

ANSH SOLAR



Low quality material and lack of planning before installation can cause structure to bend. This kind of structure cannot last for 25 years.



Well-designed structure gives better stability to the system over long period of time.



Structure attached to a parapet may not last for 25 years.



Well-designed structure gives better stability to the system over long period of time.



# Great structure needs good foundation

OTHER

V/S

ANSH SOLAR



Structure without foundation can create problem in strong wind. It cannot last for 25 years. Using nails is also not durable in strong wind.



Proper foundation makes the structure last for long. We use anchor fasteners so the structure withstands strong wind. For heightened structure we use chemical fastening to have more strength.



# Galvanized box pipes play an important role

OTHER

V/S

ANSH SOLAR



Structure of L angle is not strong enough. Structure without galvanizing can corrode very fast and it loses its strength in very short time.



Box pipe with minimum 2.5 mm thickness with hot deep galvanizing is strong enough to support your solar panel for a long duration.

# Base plat gives better grip

OTHER

V/S

ANSH SOLAR



Angle pipe as a base is not strong enough.



Base plat gives better grip with RCC slab. It also helps in stabilizing structure. We can use 4 anchor bolts with the help of base plat.



# Mounting method makes a big difference

OTHER

V/S

ANSH SOLAR



J bolt for panel mounting is not durable. Using U clamp for connecting two rafter is risky.



We use strut channel and clamps for panel mounting which is considered one of the strongest method.

# Neat & Clean Electrical Work

OTHER

V/S

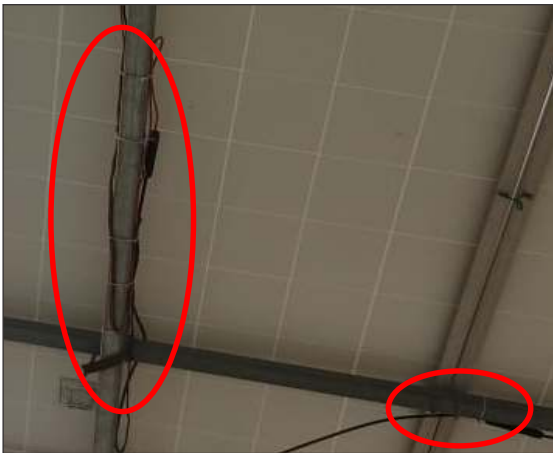
ANSH SOLAR



Open wiring may cause problem. Weather may effect open wiring.



Neat and clean electrical work with UPVC conduit pipe. Use of screw for longer durability.



Normal white cable tie is not durable in tough weather conditions.



Use of UV resistant cable tie which is more durable than normal cable tie.

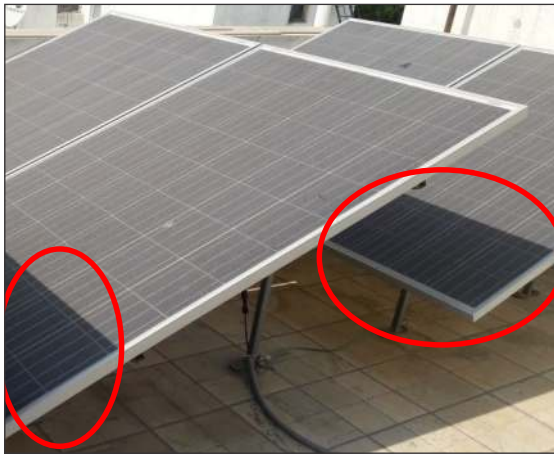


# Proper planning to maximize power production

OTHER

V/S

ANSH SOLAR



Lack of planning before installation can result in shadow on panel and customer can suffer loss in power generation to a great extent because of shadow.



Proper planning and use of special software to analyze possible show along with creative structure design results in best power production.



# We maintain aesthetics of your wall

OTHER

V/S

ANSH SOLAR



Black or blue conduit pipes are sometimes not esthetic.



While conduit pipes goes with esthetic look of your walls.



# Bankable panels with best designing

OTHER

V/S

ANSH SOLAR



Poor quality panel along with poor system design may not give your desired output in long run in spite of warrantee.



Best quality panel along with proper system designing will give you uninterrupted power generation for 25 years.





**LET'S  
JOIN HANDS  
TO MAKE  
SOLAR ENERGY  
WORK FOR  
YOU!**

THE BEST IN SOLAR ENERGY

